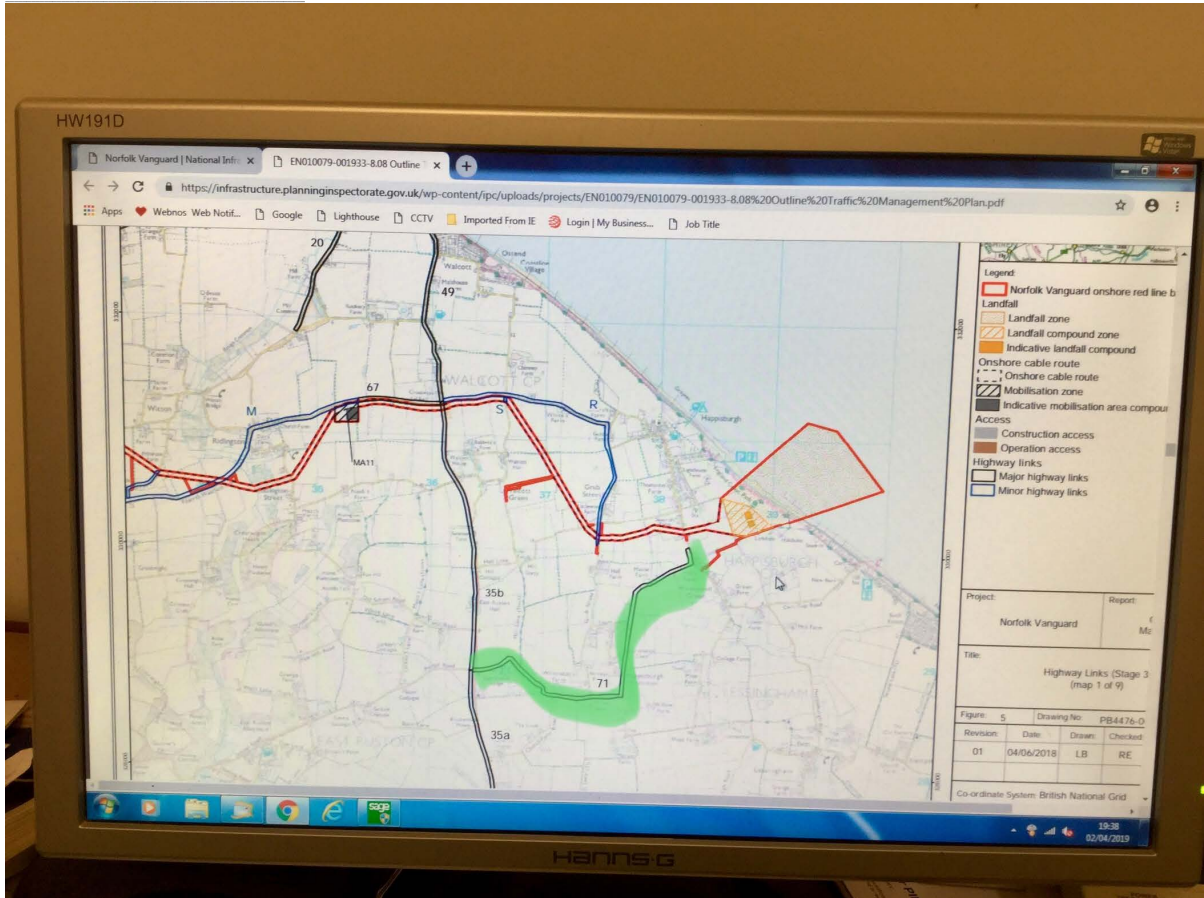


From: [Chris Berry](#)
To: [National Infrastructure Planning Inspectorate](#)
Subject: [Happisburgh](#)
Date: 04 April 2019 20:01:18

I confirm this route marked in green is the route I took from landfall out of Happisburgh to the main road with The Planning Inspectorate. I did offer Mr Driver to accompany me but it appears he was still looking at his plans when we left. I am some what surprised VF raised this matter after I left the meeting in Norwich when earlier in the meeting I spoke about transport.
Yours faithfully
Chris Berry
Happisburgh PC, 20012507

This email has been scanned by the Symantec Email Security cloud service.
For more information please visit <http://www.symanteccloud.com>



Scat from my iPad

From: [Glenn Berry](#)
To: Norfolkvanguard@pins.gsi.gov.uk
Cc: glenn@hallfarmforage.co.uk
Subject: Fw: pins cliff to lighthouse
Date: 04 April 2019 20:04:54
Attachments: [pins cliff to lighthouse.docx](#)

From: [Glenn Berry](#)
Sent: Thursday, April 04, 2019 7:36 PM
To: Norfolkvanguard@pins.co.uk
Subject: pins cliff to lighthouse

Copy of letter given to Inspectorate and VF at site visit to Happisburgh.

Glenn Berry Happisburgh PC

This email has been scanned by the Symantec Email Security.cloud service.
For more information please visit <http://www.symanteccloud.com>

GLENN BERRY Chair of Happisburgh Parish Council

LARKSFIELD. HALL FARM ~ GRUB STREET, HAPPISBURGH ~ NORFOLK, NR12 ORQ

Phone / Fax 01692 650321 - E mail glenn@hallfarmforage.co.uk

24th March 2019

To The Planning Inspectorate Norfolk Vanguard

I hope this may help to judge distances at Happisburgh Land Fall site.

This weekend I measured the distance with a measuring wheel from the Cliff edge to the Lighthouse 165mtrs and back from the Lighthouse to the cliff edge 164.5 mtrs.

I am happy to put this before you as a fair and honest.

I will have the wheel with me on Monday should anyone wish to check these distances.

Yours faithfully

Glenn Berry Chairman Happisburgh PC